



Ion Chromatography of Chlorate Ions in Tap Water

Introduction

Chloric acid (Hydrogen chlorate), a strong oxidizing agent, occurs as a decomposition product derived from chlorine dioxide and sodium hypochlorite which are used as a disinfectant for water clarification.

We examined the usefulness of ion chromatography for the separation and determination of this compound.

Experimental

The system utilized in this experiment was a JASCO 2000 Plus system consisting of a PU-2080 pump, DG-2080-53 mobile phase degasser, CO-2060 column oven, AS-2057 auto sampler, CD-5 conductivity detector(Shodex), an ion suppressor module, and ChromNAV chromatography data system.

The method was applied to the analysis of tap water. The water (1 L) was mixed with 0.5% ethylenediamine (1 mL), and then filtered with 0.2 μm membrane filter. An aliquot of 50 μL or 100 μL was injected.



Jasco LC 2000 Series

Results and Discussion

Figure 1 shows a chromatogram of a standard mixture of 10 anions. Resolution between Peak 7 (chlorate ion) and neighboring Peak 6 (bromide ion) exhibits greater than 2. There was no overlapping between these two peaks with any different concentrations, resulting in precise determination. Minimum detectable amounts proved 18.9 ppb (1.89 ng) at S/N=10, and 5.7 ppb (0.57 ng) at S/N=3. The calibration curve of chlorate ion indicated linearity between 5 ppb and 1 ppm with a coefficient of correlation of 1.000. Repetitive injection (n = 5) of 10 ppb solution of 100 μ L provided relative standard deviation of 3.79%.

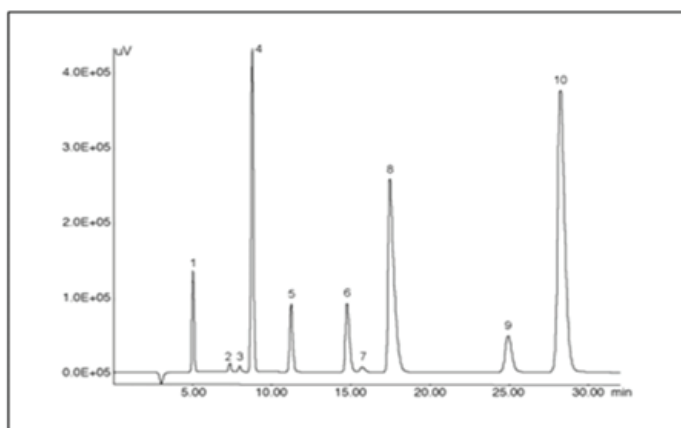


Figure 1. Chromatogram of a standard mixture of 10 anions.

Peaks: 1 = fluoride (F^- , 2 ppm), 2 = chlorite (ClO_2^- , 1 ppm), 3 = bromate (BrO_3^- , 1 ppm), 4 = chloride (Cl^- , 10 ppm), 5 = nitrite (NO_2^- , 5 ppm), 6 = bromide (Br^- , 10 ppm), 7 = chlorate (ClO_3^- , 1 ppm), 8 = nitrate (NO_3^- , 30 ppm), 9 = phosphate (PO_4^{3-} , 15 ppm), 10 = sulfate (SO_4^{2-} , 40 ppm) Chromatographic conditions: column = Shodex IC SI-52 4E (4.6 mm ID x 250 mm L); column temperature = 45°C; mobile phase = 3.6 mM Na_2CO_3 ; flow rate=0.8 mL/min; injection volume=50 μ L.

Figure 2 shows a chromatogram of the tap water mixed with chloric acid (60 ppb). Chlorate ion (Peak 3) is separated clearly from other peaks.

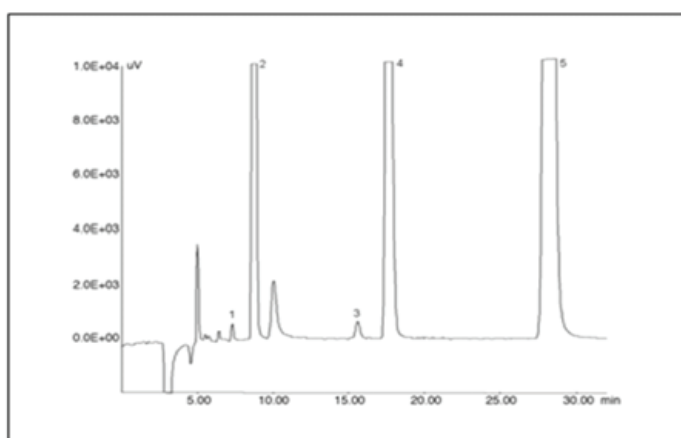


Figure 2. Chromatogram of the tap water mixed with chloric acid (60 ppb.)

Peaks: 1 = chlorite (ClO_2^-), 2 = chloride (Cl^-), 3 = chlorate (ClO_3^-), 4 = nitrate (NO_3^-), 5 = sulfate (SO_4^{2-})
The other conditions are the same as in Figure 1 caption.